

# 2023 NAMI WA OPERATING AND CAPITAL BUDGET ASKS

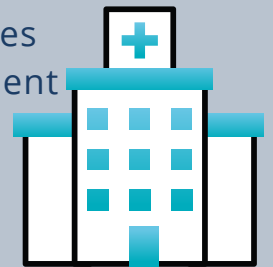
## MAINTAIN \$500,000 FUNDING FOR PEER-LED COMMUNITY-BASED PROGRAMS FOR NAMI WA

- NAMI programs are an integral part of prevention and early intervention.
- Investing in community supports reduces the use of more costly, higher-level services.
- These programs are not duplicated within the behavioral health system.



## CAPITAL BUDGET FUNDING FOR COMMUNITY-BASED TREATMENT FACILITIES AND NEW WESTERN STATE FORENSIC HOSPITAL

- WA currently ranks 48th out of 50 state for mental health services compared to access of care, particularly when it comes to inpatient capacity.
- The national average for in-patient beds is 26.1 per 100,000 residents. Washington averages 8.3 beds.
- Community-based facilities allow people to receive treatment close to their families and support network.



## SUPPORT THE 15% INCREASE IN MEDICAID REIMBURSEMENT RATES

- Increasing Medicaid reimbursement will help increase and maintain behavioral health workforce
- According to a survey by the Washington Council for Behavioral Health, there is a 26% statewide vacancy rate of mater's level clinical staff.
- When behavioral health providers serving Medicaid clients burn out and leave their professions because of low pay and high need, low-income and marginalized communities do not receive the behavioral healthcare they need.



**CONTACT:** MELANIE SMITH, LOBBYIST, SMITH.MELANIEJ@GMAIL.COM

**ANNA NEPOMUCENO**, DIRECTOR OF PUBLIC POLICY,  
ANEPOMUCENO@NAMIWA.ORG

